



DIY DataRecovery Software

DataBack user manual

Getting DataBack to run

- Data Recovery with DataBack
- Recovering deleted files
- Recovering data from accidentally formatted volume
- DataBack issues

Contact us

© 2000 - 2002 by Joep van Steen / DIY DataRecovery. All rights reserved.
No parts of this document may be reproduced in any form without written consent of DIY DataRecovery.
This document, accompanying text files and programs come 'AS IS', or better said, 'as they are'.

The simple license concept:

- * The license is a legal agreement between you and DIY DataRecovery. This agreement implies the following:
- * By using the software you indicate you accept the license terms.
- * DIY DataRecovery may distribute program(s) as shareware. These programs may offer only limited functionality.
- * You can use the shareware version(s) of the program(s) to determine if the program(s) can recover your data. Once you have determined it/they (partially) can, or you intend to keep the software for later use, you must register the software and pay for it.
- * One registration allows you to use the licensed program(s) on 3 computers that you own and to electronically store the program(s) for future use. If the software is stored in a network for example, it may only be used by 3 particular computers. Once it is used on 3 computers, you may NOT use the software on a 4th computer even if it is uninstalled from the previous 3 you used the software on. The license is NOT transferable.
- * The licensed program(s) may NOT be used in a commercial or government organization unless; you obtain a technicians license (contact DIY DataRecovery for details).
- * You are allowed to redistribute the shareware version(s) of the program(s) as long as you do NOT charge for the program itself. You not allowed changing the distribution (the .ZIP file) in any way.
- * You are NOT allowed to redistribute the licensed program(s) and/or accompanying documentation.
- * DIY DataRecovery will provide registered users with technical support in one or more of the following ways; online forum support, the availability FAQ's on the Website or e-mail. An initial support request must be submitted through the online forum. No guarantees are given about the time frame that an electronic inquiry is replied to. Refer to the chapter 'technical support' for details.
- * If DIY DataRecovery is contacted for support (through the online forum initially), the user understands that the process of recovery is a mutual effort by both the end user and the support technician. Support personnel may indicate that recovery with the DIY DataRecovery software and/or documentation is not possible, the reported issue will be closed in such a case. Support personnel may decide that the forum is not preferred for handling specific issues and may take it to email, it must always be the support staff that initiates the delivery of technical support by email.
- * By paying for this software and/or documentation you reward our efforts for creating this, not for a guaranteed recovery. We do not guarantee that the software and/or documentation meets your requirements.
- * DIY DataRecovery cannot and will not guarantee positive recovery results. Advice given through documentation, website, or email comes 'as is'. We cannot and will not be held responsible for any damage that is inflicted by the person and/or persons using the Information and/or Programs we supply.
- * If recovery fails, for a reason as described in the previous 3 items, or any other reason, this is not a reason for a refund.
- * If updates are available, DIY DataRecovery will make those available on the website.
- * An update is a newer version of the program that fixes bugs and/or adds functionality that doesn't cause the number in front of the period to change. So, the program version changing from 1.1 to 1.2 is considered an update. The version that changes from 1.2 to 2.0 is an upgrade. Although we have a history of making upgrades available free of charge for registered users, we do not guarantee this for the future.
- * DIY DataRecovery may use forum/email correspondence for assembling online recovery guides or FAQ documents.
- * You are not permitted to decompile, disassemble or change the program code in any way.

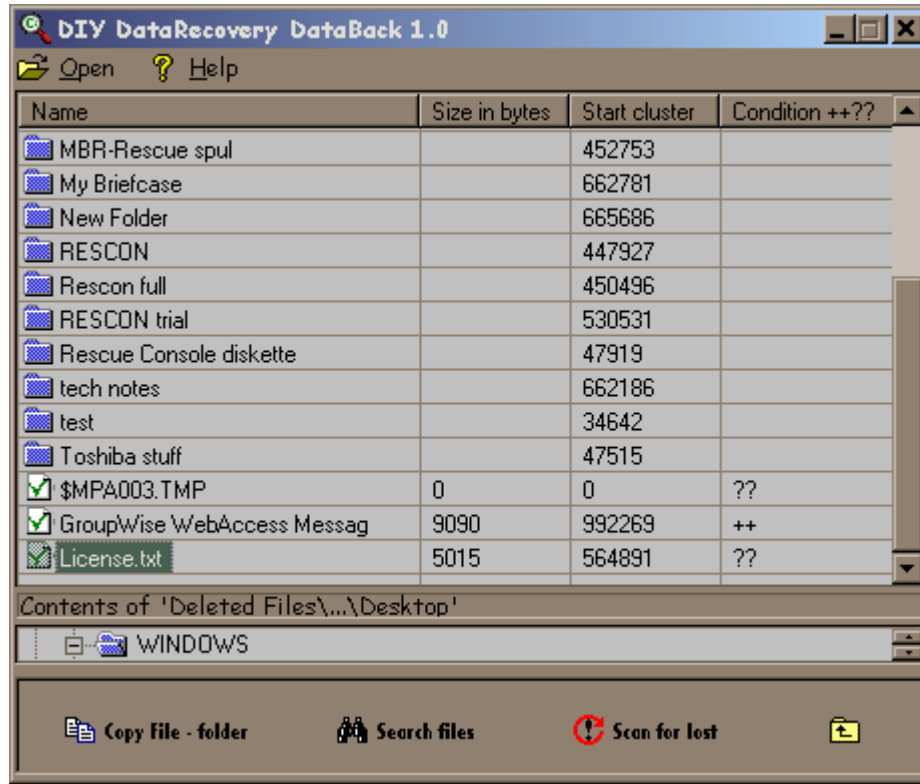
All the registered trademarks used herein are registered to whoever it is that owns them. This notification is given in lieu of any specific list of trademarks and their owners.

Getting the DataBack program to run:

The DataBack program is contained in the ZIP file you downloaded from RegNet. The program does NOT require installation. Simply extract the 'DataBack.exe' file to any location you like. From Windows, simply double click on the icon for the DataBack program to run it.

The program requires Windows '95b/c, '98 or ME to run.

The file is small enough to fit on a 1.44 Mb diskette. You may want to run DataBack from diskette in case you want to recover a deleted file or folder from a running Windows system.



The DataBack program can be used for recovering data from FAT based file systems.

Data Recovery with DIY DataRecovery DataBack

DIY DataRecovery DataBack is an easy to use 32-bit Windows data recovery program. The program accesses the damaged volume or disk read-only. It will not help you repair logical disk structures, it will only help you extract files and folders in certain scenario's. It does not offer all Rescue Console functionality, but routines used for detecting volumes, browsing volumes and copying data from volumes are essentially the same. And so are the procedures, in order to recover data from a volume, you must locate it, mount it and browse it.

DIY DataRecovery DataBack does not require any installation and can be run from Windows 95b, 95c, 98 and Windows ME. The program supports the FAT12 (diskette), FAT16(X) and FAT32(X) file systems.

Important! Never copy the DataBack executable to the volume you are trying to recover data from and never select the volume you are trying to recover files from as the destination disk.

There are 2 basic scenario's where DataBack can be used; to recover deleted files from a healthy volume, and folders from a accidentally formatted volume.

1. Recover deleted files and folders.

This is without doubt the most common mistake people make, delete a file and realize later that you should never have deleted it. With DataBack, the recovery of a deleted file is possible as long as, the area's that contained the data of the file were not overwritten and if the contents of the file were stored in next adjacent clusters (if the size was > 1 cluster).

Though the same principles are used to recover a deleted file as in Rescue Console, mounting the volume and locating the file is more comfortable.

a. Locate & mount the volume. When the program is started, it will try to detect Windows devices, and if they are found, it will list them..

Once you have the determined the volume that contains the deleted file, select it and click 'Mount'. (For undeleting files, the 'Recovery Mode' box does not have to be modified).


b. Browsing the volume. Browsing the volume is very similar to the way you use the Windows Explorer. In the lower pane, the folders are displayed, in the upper one files and subfolders are displayed in 'small icon view'. In the lower pane, there are always 3 folders present, the, 'deleted files', 'Lost & Found' and the 'Search Results' folders. For quickly locating deleted files and folder, select the 'deleted files' folder. All deleted files and folders will show up here in their original location. So if I deleted one of my JPG files from the folder 'My Document\My Pictures, I simply expand the 'My Documents\My Pictures' folders and see if the file is there. Deleted files and folder icons are colored green. Files marked ++ in the status column have a good chance to be recovered intact, if ?? is displayed in the status column, files may be okay after recovery, but they might be damaged.


c. Copying the file can be done by simply selecting it, and click the  button.

You can select multiple files or folders at once using the CTRL or SHIFT key while selecting files and folders. You will now be asked to enter a destination for the file(s). Select a different volume than the one you are recovering from.

2. Recovering files and folders from an accidentally formatted volume.

The re-formatted volume must be formatted with the exact same parameters as the original format, otherwise DataBack can not be used for recovering data. So, if you originally had a 2 Gb FAT32 volume with the 4 Kb clusters, it must be formatted with those values again.

a. Locating and mounting the volume. The volume will show up after the  button is clicked since the formatted volume is defined as a logical volume. Before clicking the 'Mount' button, you have to set the 'Recovery Mode' to 'Unformat mode'.


b. The root of a formatted volume is likely to be empty, so the '\..' folder will not show any contents, or maybe only the 'Recycled' folder. Also, anti-virus programs and indexing programs may already have copied some information here. Before you can actually browse the contents of the volume that were present prior to the format, we will have to find them. For this, click the  button. A new dialog will appear allowing you to set the range that should be scanned. A scan can take quite some time, and you may want to scan the volume area by area. After you have modified the cluster values, click update > OK.


Scan results will be displayed in the 'Lost & Found' folder and the folders will be named after the cluster they were found in. Subfolders will have their original names.

DataBacks scanned for folders on a re-formatted volume:



It is 'normal' that files and folders are displayed with 'strange' names because of the scan mask DataBack uses to locate possible directories. The same will occur in Rescue Console.

If a lot of folders were found, it may be hard to locate the files that you are desperate to recover. You can use the 'Find' option to do searches. Click the  button and enter a file name or do a wildcard search. If you for instance want to locate all files with the '.doc'. extension, enter *.doc and click OK. Search results will be displayed in the folder 'Search Results'.

c. Select files and folders you want to recover and copy them by clicking the  button.

DataBack issues

DataBack says my destination drive is full, I say it's not ...

You are probably trying to recover files from a re-formatted volume. DataBack uses a very simple algorithm to locate 'lost' folders. The first character of the first directory entry is always '.', while the first 2 characters in the second entry are always '..'. In case DataBack finds a sector that meets those two criteria, it will assume it is the start of a lost folder even when it's not. All information in this sector will be treated as directory entries. If an entry has an enormous value for size, you may run into the above message when trying to copy it.

DataBack finds loads of garbage on re-formatted partition

DataBack uses a very simple algorithm to locate 'lost' folders. The first character of the first directory entry is always '.', while the first 2 characters in the second entry are always '..'. In case DataBack finds a sector that meets those two criteria, it will assume it is the start of a lost folder even when it's not. The sector(s) will be interpreted as a folder, and for each folder entry the first 11 characters are interpreted as file/folder names. This may result in garbage.

Recovered files are corrupt

DataBack can not use the FAT to allocate clusters that made up your file. If you are recovering deleted files, or files from a reformatted volume, the FAT is ignored. DataBack assumes that the file was stored in next adjacent clusters even if it was not.

Program hangs when scanning a volume for data

Disable all other programs running in the back ground, and disable all Power Management options.

DataBack does not find root contents on re-formatted volume

If a volume is formatted, system area's including the root folder are re-initialized. Basically this means they are over written with a byte pattern and overwritten information can not be retrieved.

Technical Support and contact.

Technical support is only available for registered users. They are invited to use the online forum on our website to post their questions.

Before posting, please refer to the manual and see if the issue you're dealing with is described there. Also, program errors may be resolved in the last update, so always make sure you're running the latest program builds.

For posting questions in the forum, a password is required. You can find the password in the readme.txt file that was contained in the ZIP file you downloaded from RegNet. If no password is entered, the forum will be read-only to you.

When posting in the forum, please include an email address, it is possible that support will contact you by email.

Support may request logfiles, in case they do, large log files etc. can be sent to support@diydatarecovery.nl. Please include your RegNet ID when mailing.

Initial support queries must always be posted in the forum and NOT sent to support@diydatarecovery.nl!!!

For all other info use the info@diydatarecovery.nl email address.

Website: <http://www.diydatarecovery.nl>

Updates: <http://www.diydatarecovery.nl/~tkuurstra/updates.htm> (password required)

Forum: <http://pub50.bravenet.com/forum/show.asp?usernum=4220517151&cpv=1> (password required)